



# NBPS Newsflash

## February 2022

Greetings Team NBPS

First, THANK YOU to all staff for your continued dedication and support of the teaching and learning process in New Bedford Public Schools. I know it has been a struggle – for us all – and sometimes it is hard to see the forest for the trees, but please know that each of you has a purposeful impact on what we do as a school system. As an organization we have been a leader not only in Massachusetts, but across the region thanks to what is being done in our schools to manage the pandemic. There is no getting back to “normal” – know that normal was not the best situation for many. Our objective is to recognize the changes, manage how we address them, and build on what we knew as “normal” to raise that bar.

It's that time of year when weather is part of daily discussions shifting the dialogue temporarily away from COVID. Our Building Services/Custodial teams are to be commended for positioning us to open schools after the recent storm. THANK YOU!!

I am proud of the decisions that have been made in both areas as we find ourselves needing to adjust and adapt to the everchanging situations. As we deal with these areas, we must not lose sight of what is tremendously important to our students and to our staff.

Our current COVID testing process will remain in place as we create ways to lessen the burden on our entire NBPS Health Department, especially our nurses. After consulting with colleagues in other large districts, I am encouraged by their feedback regarding DESE's ability to meet their test kit needs in the new process. There has been tremendous progress made to ensure districts are receiving the appropriate resources to shift the process and reduce the volume of the close contact investigations.

Of utmost importance is the need to assure our students are in an environment that is both physically and mentally safe and provides them with access to quality programming.

Although the pandemic has disrupted initial plans and forced us to divert resources – time and financial -- we have all worked diligently to modify structures and processes to positively impact the teaching and learning process in several important ways. We should be proud of the progress that our NBPS team has made in the areas of Equity, Diversity, and Inclusion. Again, despite the challenges that the pandemic has thrown our way, our team continues to strive to provide our students with an environment that is positioning them to do great things. Although it may not be where it should be, take a moment to reflect on what we have learned and how much more insight we have and how much stronger we are as a collective body. Thanks to each of you – in every role across New Bedford Public Schools – we are providing students access to a quality learning environment filled with encouragement and effective programming.

I thank you for your ongoing efforts and dedication to providing the best for our students and support for each other.

Sincerely,

Thomas Anderson  
Superintendent



“What counts in life is not the mere fact that we have lived, it is what difference we have made to the lives of others that will determine the significance of the life we lead.”

— Nelson Mandela

### INSIDE THIS ISSUE

Employee Spotlight: 2  
Emerging Teacher  
Scholarship: 3  
JA Volunteer: 4  
February calendar: 4  
JET Program: 5  
Future Whalers: 6  
MTEL Classes: 87  
Notices: 8

# Employee Spotlight



## Amy Morrison

Special Education Teacher  
Charles S. Ashley Elementary School



Amy Morrison, special education teacher at Ashley School, has a great rapport with students and a wonderful way of engaging them in learning. She turns many of her lessons into games. Her pointer is a wand and students love to use it and “be the teacher”. Because she understands her students’ needs, it is not unusual to see her in the hall taking a student for a walk and dancing to “help the student get the wiggles out.” Ms. Morrison is very adept at integrating technology into her lessons. During the early months of COVID, she searched for online programs and apps that would keep students engaged in remote learning. Her willingness to do what she can to help our school community contributes immeasurably to a positive school culture. She always seems to magically appear when assistance is needed. She goes above and beyond her assigned duties and responsibilities and is always asking if there is something she can do to help. We are so fortunate to have Ms. Morrison on the Ashley team!

*Christine M. Pugliese, Principal, Ashley Elementary School*



## Carey Souza

Crossing Guard  
Carlos Pacheco Elementary School



Carey Souza (aka Miss Pinky) is hard to miss dressed as a dinosaur ensuring students cross safely in the crosswalks.

Carey Souza, crossing guard at Carlos Pacheco, is better known as Miss Pinky. With her pink hair, pink safety vest and pink cones, Ms. Pinky ensures that all students arrive and dismiss safely from the school. After school vacations, she sometimes comes dressed in an inflatable dinosaur costume to welcome back students. At family engagement events and award assemblies Miss Pinky proudly acts as the school mascot, bringing the Carlos Pacheco Bulldog to life. She always goes above and beyond for the students and staff at Pacheco. We are thankful for the hard work and dedication of Miss Pinky.

*Nicole Brine, Principal, Carlos Pacheco Elementary School*

MOUNT HOLYOKE<sup>SM</sup>

## THE EMERGING TEACHER SCHOLARSHIP

Open to MA teachers with  
emergency licenses, teachers on waiver,  
& paraprofessionals who enroll in the  
Master of Arts in Teaching,  
initial licensure program.

25+ LICENSURE AREAS  
INCLUDING SPED & ELL

SCHOLARSHIP AMOUNTS  
UP TO \$10,000

Attend Online or In-Person

SCAN BELOW  
TO APPLY FOR  
SUMMER '22

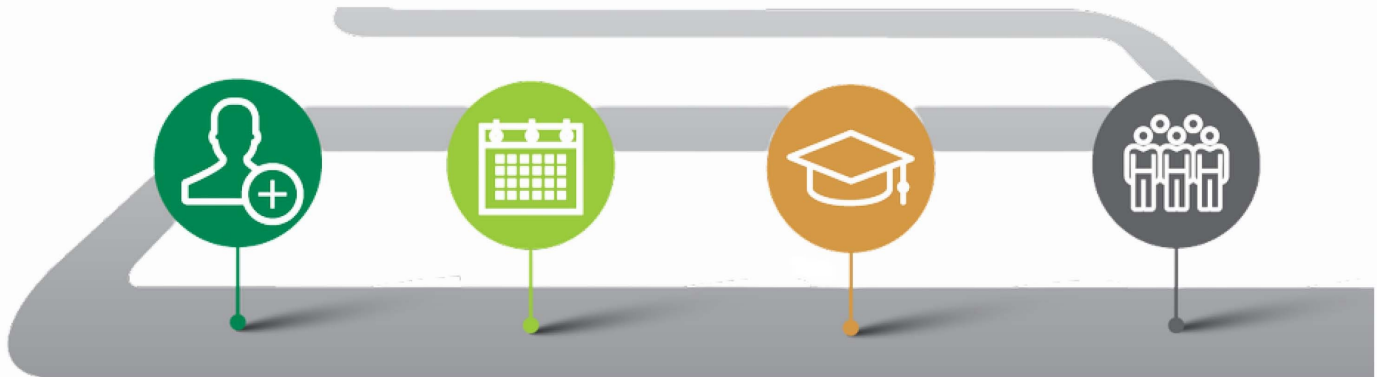


SCAN BELOW TO  
LEARN MORE  
ABOUT THE MAT  
PROGRAM





As a Junior Achievement volunteer, you will inspire kids to achieve a more fulfilling career and life by contributing your professional insights and personal experiences to the programs you teach.



How you volunteer is important! Select the type of volunteering that is most suitable to get more information and complete a form that our Programs Managers will use to contact you.

You will have the opportunity to discuss with your Program Manager your preference of how or where you would like to Volunteer and coordinate your schedule.

Our Program Manager will provide you with a short but effective training session in which you will be able to ask questions. We will make sure you are ready to volunteer!

Sharing your professional and personal experiences through the JA program you have selected helps students see how they can achieve their dreams!

**Friendly February 2022**

**MONDAY**



7 Show an active interest by asking questions when talking to others

14 Tell a loved one or friend why they are special to you

21 Really listen to what people say, without judging them

28 Give positive comments to as many people as possible today

**TUESDAY**

1 Send a message to let someone know you're thinking of them

8 Share what you're feeling with someone you really trust

15 Support a local business with a positive online review or friendly message

22 Give sincere compliments to people you talk to today



**WEDNESDAY**

2 Ask a friend how they have been feeling recently

9 Thank someone and tell them how they made a difference for you

16 Check in on someone who may be struggling and offer to help

23 Be gentle with someone who you feel inclined to criticise



**THURSDAY**

3 Do an act of kindness to make life easier for someone

10 Look for good in others, particularly when you feel frustrated with them

17 Appreciate the good qualities of someone in your life

24 Tell a loved one about the strengths that you see in them



**FRIDAY**

4 Organise a virtual 'tea break' with a colleague or friend

11 Send an encouraging note to someone who needs a boost

18 Respond kindly to everyone you talk to today, including yourself

25 Thank three people you feel grateful to and tell them why



**SATURDAY**

5 Make time to have a friendly chat with a neighbour

12 Focus on being kind rather than being right

19 Share something you find inspiring, helpful or amusing

26 Make uninterrupted time for your loved ones



**SUNDAY**

6 Get back in touch with an old friend you've not seen for a while

13 Smile at the people you see and brighten their day

20 Make a plan to connect with others and do something fun

27 Call a friend to catch up and really listen to them





## **JET 2022-2023 Recruitment**

[www.jetintoteaching.org](http://www.jetintoteaching.org)

**Are you a Massachusetts public school paraprofessional without a Bachelor's degree who wants to become a licensed teacher?**

**If so, the JET Program is for you!**

*"Without the JET Program this would have remained a secret dream in my heart. The grant made it possible to pay for school, but the Jet Program helped me finish the path." JET Participant*

**JET** provides a pathway to help you complete your Bachelor's degree, at little cost, and your Massachusetts teacher licensure.

**JET** supports the goals of building local teacher pipelines and developing an educator workforce that reflects the racial, cultural and linguistic diversity of students.

### **What JET can do for you**

- Mentor and support you through your bachelor's degree completion and teacher licensure
- Advise you on teacher pathway programs in Massachusetts colleges/universities
- Help you access financial aid available to Massachusetts paraprofessionals
- Connect you with a cohort of paraprofessionals on this journey to become a teacher
- Provide professional and career development learning opportunities

### **How JET works**

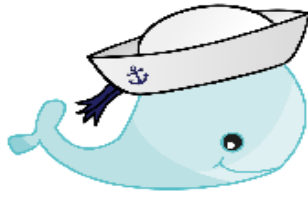
1. Apply online to the JET Program now through March 15, 2022 - two step process
  - a. Fill out the [Interest Form](#) or visit [www.jetintoteaching.org](http://www.jetintoteaching.org).
  - b. **If eligible**, You will be sent a JET application form.
2. Advisement April - June 2022
3. College Admissions
4. Financial Aid
  - a. **FAFSA** <https://studentaid.ed.gov/sa/fafsa> - Must be completed prior to applying for the state grant application below
  - b. **MA Paraprofessional Teacher Preparation Grant**  
<http://www.mass.edu/osfa/programs/teacherprep.asp>
5. Once admitted to college and approved for financial aid, enroll in classes for 2022 Fall Semester
6. Attend **JET** Orientations in June and August 2022
7. Participate in **JET** Mentoring and Support Program from September 2022 - June 2023

### **Eligibility for JET**

- Career goal of becoming a Massachusetts licensed teacher
- Seeking a Bachelor's degree
- Permanent resident of Massachusetts for at least 1 year prior to upcoming academic year
- Employed for 2+ years as a paraprofessional in a Massachusetts public school by June 30, 2022
- Have at least a 2.0 GPA in prior college coursework
- U.S. Citizen or non-citizen eligible under Title IV regulations
- Not in default of federal or state student education loans

**QUESTIONS - Please email [jetintoteaching@gmail.com](mailto:jetintoteaching@gmail.com)**

# New Bedford Public Schools



## Future Whalers



### **Kindergarten Registration for School Year 2022/23**

Children born on or before August 31, 2017

By appointment only - from *January 24, 2022 to June 24, 2022*

### **Matrícula del Kínder para el año escolar 2022/23**

Los niños que nacieron el 31 de Agosto de 2017 ó antes

Solamente por cita - desde *el 24 de enero 2022 hasta 24 de junio 2022*

### **Matrícula do Jardim-Escola para o ano escolar 2022/23**

As crianças nascidas em 31 Agosto de 2017 ou antes

Somente com hora marcada - Desde *o dia 24 de Janeiro de 2022 até 24 de Junho de 2022*

### **Tz'ibaxik kech ak'lab 2022/23**

Chuw ak' lab' ke xi alxik xuquje' ik o pa ri ik 31 rech Agosto 2017

Chuw ri ruk pixab'anel tack'il-Kmajtik ri 24 rech ri Na'be' ik' 2022

*Kisik ri 24 rech ri Uwaq ik' 2022*

## **Family Registration Center**

**455 County Street, Room 106**

Call now! ;Llame ahora! Chame agora! Ch'abe'j chanem!

**(508) 997-4511 Ext. 14652 or 14653**



**Child Find!**

SCAN ME



[www.newbedfordschools.org](http://www.newbedfordschools.org)



# MASSACHUSETTS TESTS FOR EDUCATOR LICENSURE®



UMass Dartmouth will be hosting a series of MTEL preparation courses online this spring. **Cost: \$200 per course. NBPS teachers currently enrolled in the on-site UMD-NBPS MAT program can take any of these course free of charge.** All courses are open to the public. *Participants not currently enrolled at UMass Dartmouth may enroll through guest registration. See link below.*

### **PRD 571 Communications and Literacy Skills MTEL Preparation (test 01)**

Jan 22<sup>nd</sup> and 29<sup>th</sup> 9am-1pm register for section 7202 (class number 13984)

March 5<sup>th</sup> and 12<sup>th</sup> 9am-1pm register for section 7201 (class number 13580)

April 2<sup>nd</sup> and 9<sup>th</sup> 9am-1pm register for section 7203 (class number 13985)

### **PRD 572 Foundations of Reading MTEL Preparation (test 190)**

March 5<sup>th</sup> and 12<sup>th</sup> 9am-1p register for section 7201 (class number 13581)

### **PRD 575 English as a Second Language (ESL) MTEL Preparation (test 54)**

Jan 22<sup>nd</sup> and 29<sup>th</sup> 9am-1pm register for section 7201 (class number 13986)

April 2<sup>nd</sup> and 9<sup>th</sup> 9am-1pm register for section 7202 (class number 13987)

**Use the following link to access the course registration site:**

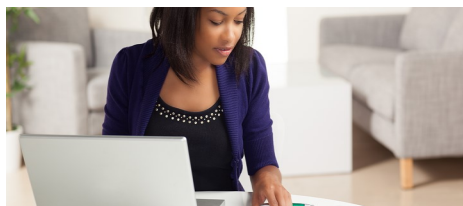
<https://www.umassd.edu/online/courses/?>

[keyword=&subject=&courseDepartments=&courseSession=&courseType=Contin+Ed+Non+Credit](https://www.umassd.edu/online/courses/?keyword=&subject=&courseDepartments=&courseSession=&courseType=Contin+Ed+Non+Credit)

From the PRD 571, 572, or 575 course screen, click on the "+" to view course details

- click "add to cart"
- click "checkout"
- Select Checkout as a Guest student
- Enter name and email.
- Complete the registration form send to the email provided.
- Once the completed form is received, enrollment will be processed.

Questions can be directed to Traci Almeida, [talmeida@umassd.edu](mailto:talmeida@umassd.edu) or 508-999-8098.



## New Bedford Public Schools Division of Adult & Continuing Education HiSET Testing Center

### Day Test Site Location:

Adult Learning Center  
181 Hillman Street, Building 2, Room 218  
New Bedford, MA 02740

Day Test Sessions: 8:30 a.m. & 10:45 a.m.

### 2022 Test Dates\*\*

- January 20
- February 3, 17
- March 3, 31
- April 7, 28
- May 12
- June 9, 16, 23

### Testing offered days and evenings!!

#### Two test locations!!!!

#### Evening Test Site Location:

New Bedford High School  
230 Hathaway Boulevard,  
Green House, Room 115  
New Bedford, MA 02740

Evening Test Sessions: 6:30 p.m.

#### 2022 Test Dates\*\*

- January 12, 26
- February 9
- March 2, 9
- April 13
- May 4, 18, 25
- June 1

\*\*Dates subject to change!!

**Please Note:**  
You must report **15 minutes before**  
the scheduled test time!!!

**Face Mask required!**



**In order to reserve your seat,**

you must register,

pay the test fees and

set your test appointment at:

[http://hiset.ets.org/test\\_takers/](http://hiset.ets.org/test_takers/)

The Future Starts Here



Expanding Opportunities. Changing Lives.  
The HiSET® Exam

Copyright © 2017 by Educational Testing Service. All rights reserved. ETS, the ETS logo, MEASURING THE POWER OF LEARNING and HiSET are registered trademarks of Educational Testing Service. ETS: 30322



New Bedford Public Schools - Division of Adult & Continuing Education  
181 Hillman Street, Building 2, Room 221, New Bedford, MA 02740  
508-997-4511, Ext 33550 or 33551

Measuring the Power of Learning®

New Bedford High School - Family Engagement Center

# WHALER'S ATTIC

EL ÁTICO DE NBHS WHALERS - O SÓTÃO DE NBHS WHALERS



## Resources - Recursos - Recursos

Clothes, Dry Foods, Backpacks,  
School Supplies, Toiletries.

Ropa, Alimentos Secos, Mochilas,  
Útiles Escolares, Artículos de Tocador.

Ropa, Alimentos Secos, Mochilas,  
Útiles Escolares, Artículos de Tocador.

## Attic Hours for Students

Horas del ático para estudiantes  
Horário do sótão para estudantes

Tuesdays from 10:30-12:30

Martes de 10:30-12:30

Terças-feiras das 10h30 às 12h30



**Need something right away? Text Ms. Miller!**

¿Necesitas algo de inmediato? ¡Envíe un mensaje de texto a la Sra. Miller!

Precisa de algo agora? Envie uma mensagem para a Sra. Miller!

Come see Ms. Miller at the Family  
Engagement Center or text her at  
860-602-8611

Ven a ver a la Sra. Miller en la familia  
Engagement Center o envíele un  
mensaje de texto al 860-602-8611

Venha ver a Sra. Miller na Família  
Engagement Center ou envie uma  
mensagem para ela no 860-602-8611



# Winter Weather Notifications

Cancellations & Early Dismissals will be  
Posted on [www.newbedfordschools.org](http://www.newbedfordschools.org)  
and sent to the following media:

- NBPS Facebook/Twitter
- NB Cable Ed Channel 9
- New Bedford Guide
- NB Standard-Times
- TV4 WBZ Boston
- TV5 WCVB-TV Boston
- TV6 WLNE Providence
- TV7 WHDH-TV Boston
- TV10 WJAR Providence
- TV12 WPRI Providence
- TV25 WFXT Boston
- WBZ 1030AM Boston
- WRKO-680AM Boston
- WSAR-1480AM Fall River
- WBSM-1420AM
- WFHN FUN107-FM Fairhaven